

# Office For Sale

900 Johnnie Dodds Blvd. Units 104-105  
Mt. Pleasant, SC 29464

## 12,761 SF Office Space in South Mount Pleasant

Conveniently located just minutes from the Ravenel Bridge and I-526, two-story office space includes:

- 65 total parking spaces
- Signage on Johnnie Dodds Blvd.
- Mix of private offices and open workspace
- Conference and break rooms on both floors
- Dedicated lobby and reception area



Current space

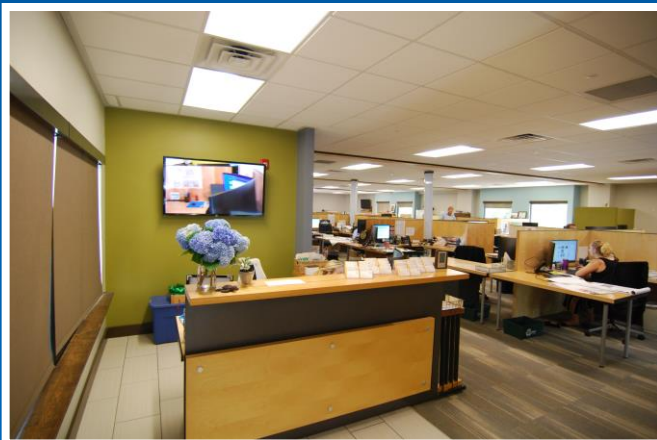


Rendering

# \$3.5 Million

900 Johnnie Dodds Blvd. Units 104-105

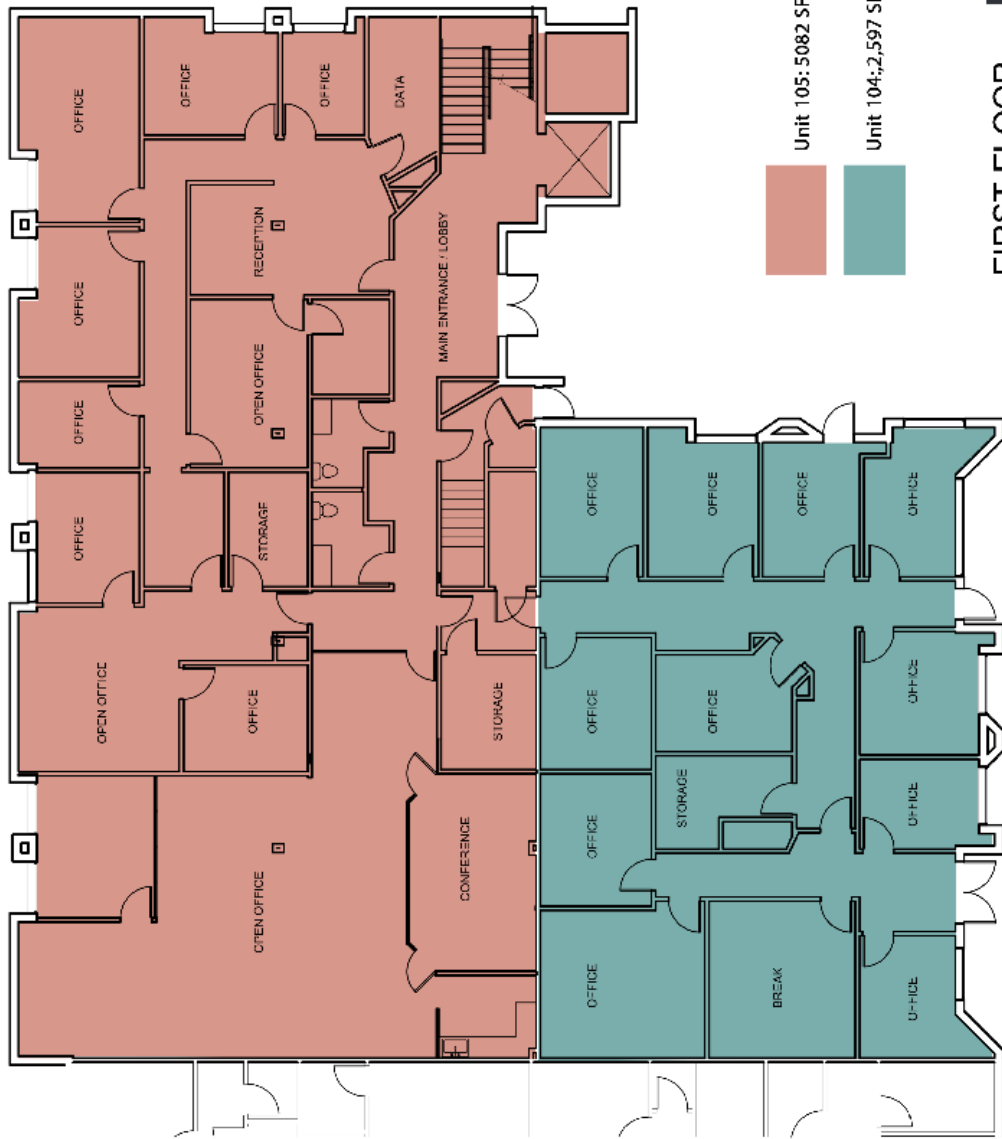
Mount Pleasant, SC 29464



**This office condominium represents the utmost in flexibility whether you are a user and/or an investor. The primary tenant is Novus Architects, Inc, and they are planning to move out within the next 18 months, but could also move out at closing. They occupy 10,164 SF including the entire 2<sup>nd</sup> floor.**

**One 3<sup>rd</sup> party tenant (Windward Farm Home For Children, Inc.) occupies 2,822 SF through August 31<sup>st</sup>, 2021.**

**See the rendering on page one to give your new office space a signature entrance.**



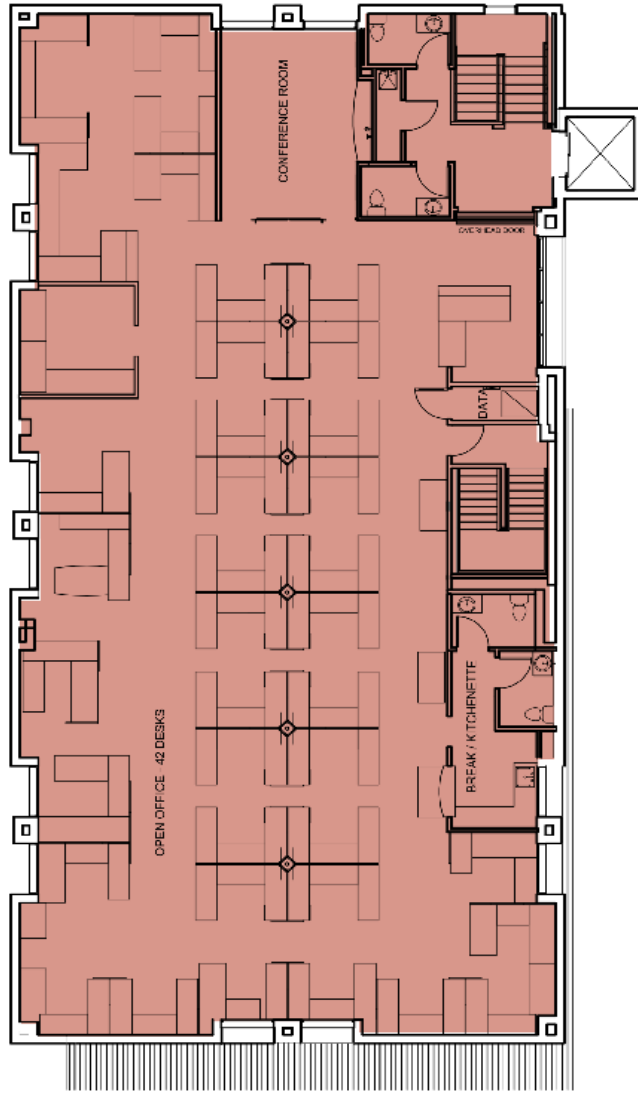
Unit 105: 5,082 SF  
 Unit 104: 2,597 SF



**FIRST FLOOR**

**900 Johnnie Dodds Blvd. Units 104-105**





Unit 105: 5083 SF



**SECOND FLOOR**



## 900 Johnnie Dodds Blvd. Units 104-105